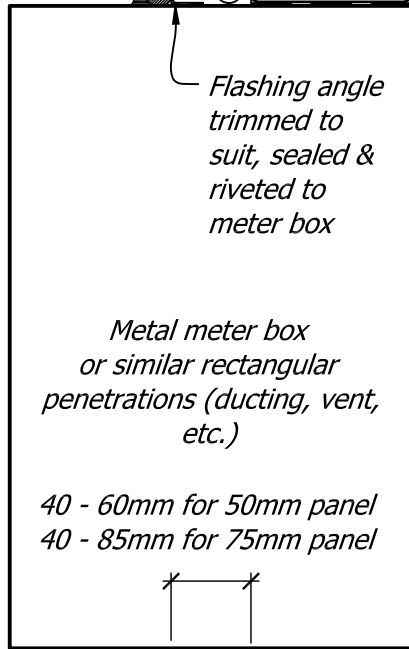


Opening edges coated with Supercoat Tanking Membrane 3 sides



Flashing angle trimmed to suit, sealed & riveted to meter box

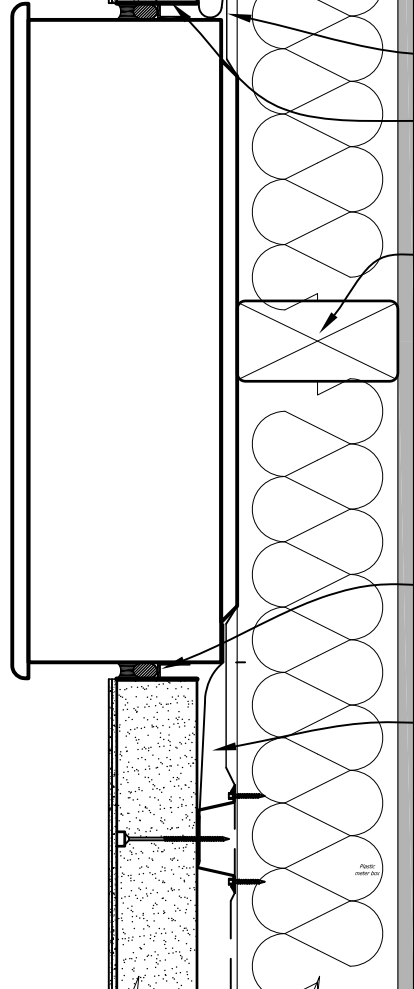
Metal meter box or similar rectangular penetrations (ducting, vent, etc.)

40 - 60mm for 50mm panel
40 - 85mm for 75mm panel

Supercoat™ Tanking Membrane to top of panel

300mm wide DPC sill flashing fitted by owner prior to meter box installation

Flashing angle trimmed to suit and riveted to meter box



Supercrete™ Panel

DPC flashing taped to building paper/wall wrap by the Supercrete™ Panel Installer

Building Paper/Wall Wrap

Supercoat™ Tanking Membrane to bottom of panel

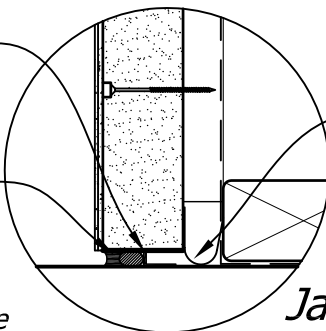
Dwangs to suit fixing points on box

Sealant (Holdfast FIX ALL 220LM MS) and Holdfast PEF backing rod

300mm wide DPC sill flashing taped to building paper/wall wrap with flexible flashing tape, by owner prior to meter box installation. Overlap 20mm minimum behind meter box and extend 150mm past each end

Flashing angle trimmed to suit, pop riveted and sealed to meter box

Sealant (Holdfast FIX ALL 220LM MS) and Holdfast PEF backing rod



DPC jamb flashing taped to building paper/wall wrap by the Supercrete™ Panel Installer

NOTE:

1. The opening in the frame for the meter box or duct shall be prepared exactly as for windows and doors, refer to Detail No SPC 4-3, page 43
2. The Supercrete™ Panel Installer will coat the edges of the Supercrete™ Panels to be fitted around the meter boxes (or penetrations) with Supercoat™ Tanking Membrane

Jamb Detail

Steelock™ a unique steel top hat batten mounting system.
Thermoseal™ a unique thermally efficient closed cavity cladding system.

Copyright © Superbuild International Ltd 2013

Supercrete™

Title:

Meterbox Detail

PANEL CLADDING CONSTRUCTION

Date: February 2014

Scale: N.T.S.

Detail No. SPC 6-8

This drawing must be read in conjunction with the Supercrete Panel Cladding System Design & Installation Guide