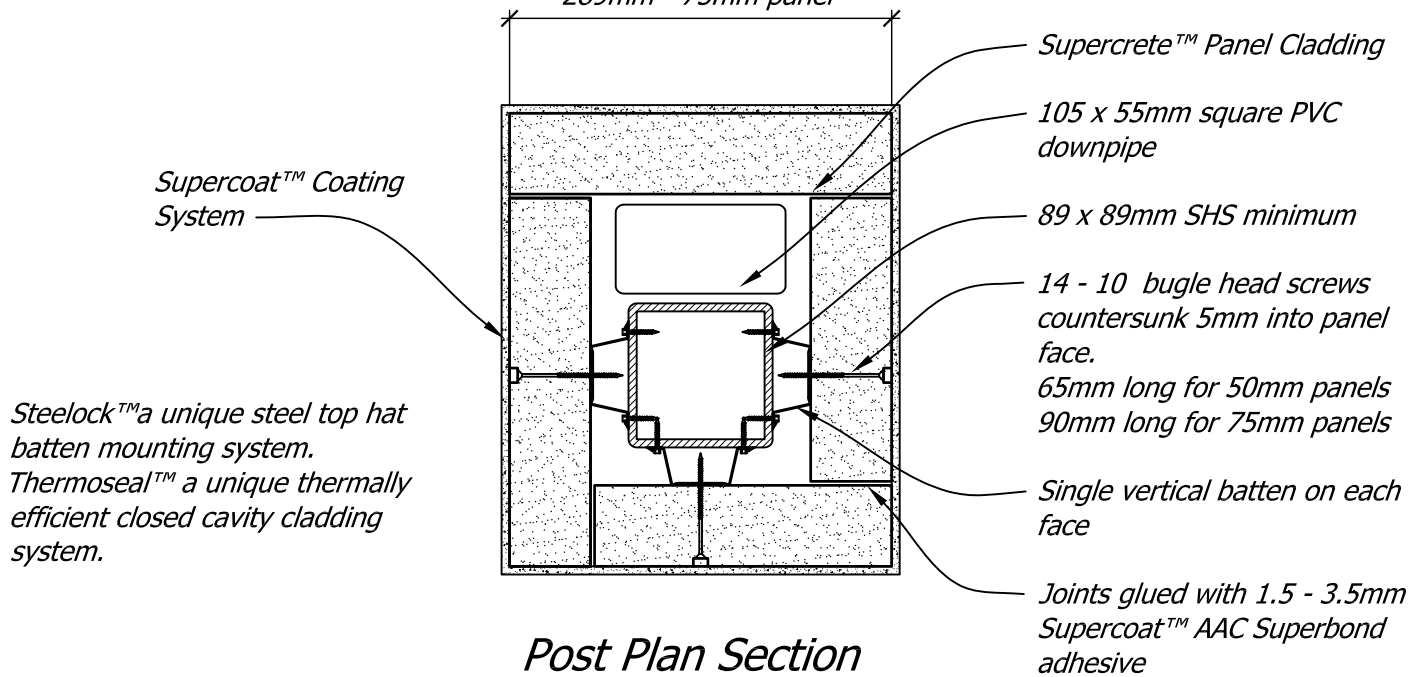


Column Plan Section

NOTES:

Similar detail can be used for steel beam encasement.
 Panel widths may be less than 270mm as panels are fully supported on battens

Minimum size
 239mm - 50mm panel
 289mm - 75mm panel



Post Plan Section

NOTES:

1. If the base of the column does not sit directly on concrete floor slab or foundation, the cavity space must be closed off using base angles
2. Top of post cladding to be sealed to a soffit, or capped to ensure no water ingress to the batten space

Copyright © Superbuild International Ltd 2013

Supercrete™

**PANEL CLADDING
 CONSTRUCTION**

Title: Cladding Detail for Steel Column and Post

Date: February 2014

Scale: N.T.S.

Detail No. SPC 6-5

This drawing must be read in conjunction with the Supercrete Panel Cladding System Design & Installation Guide