

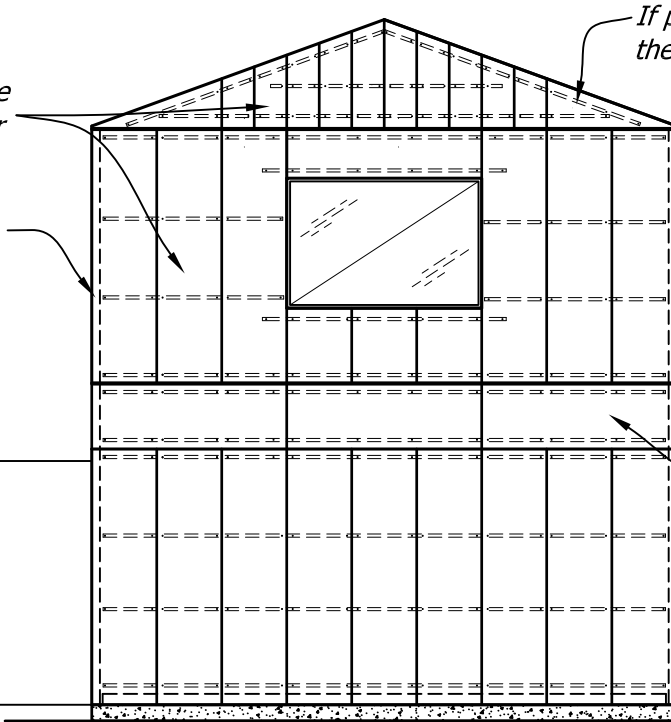
NOTE:

All battening and panel installation is performed by trained and registered Supercrete™ Panel Installers. These details are shown for general information purposes only

Panels may be cut down to 300mm wide and used in areas for ease of installation

Vertical Control Joint all corners

Max. length for 75mm Supercrete™ Panels - 3000mm
Max. length for 50mm Supercrete™ Panels - 2400mm



If panels are less than 600mm in height then panels may be horizontally installed

Articulation movement control joint Refer Detail SPC 3-4, page 29

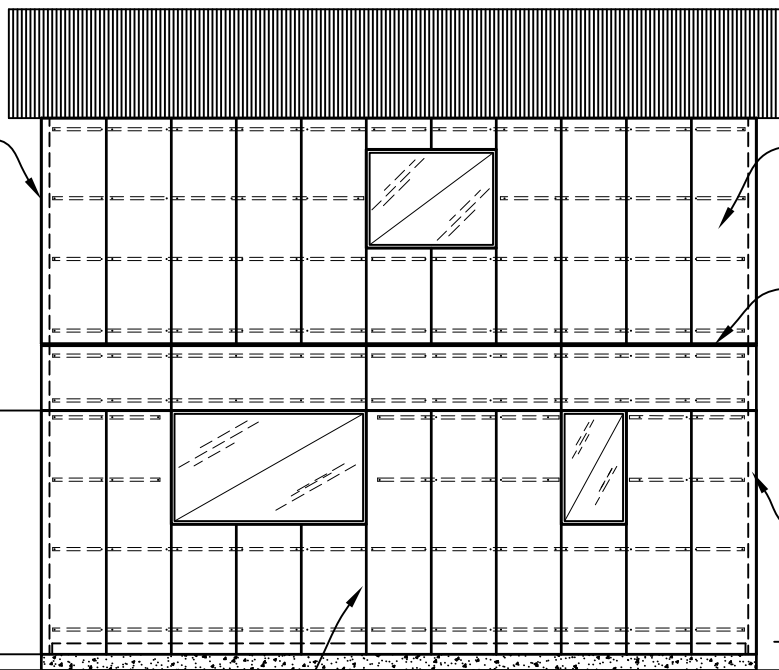
Vertical Control joints all corners

Mid-floor horizontal panels with control joints above and below panels. Refer Detail SPC 3-6, page 31

Slab level
G.L.

Gable End Elevation

Copyright © Superbuild International Ltd 2013



Top of Panels

Vertical Control Joint all corners

Panels may be cut down to 300mm wide and used in areas for ease of installation

Mid-floor horizontal panels with control joints above and below panels. Refer Detail SPC 3-6, page 31

Vertical Control Joints all corners

Slab level
G.L.

Max. length for 75mm Supercrete™ Panels - 3000mm
Max. length for 50mm Supercrete™ Panels - 2400mm

Recommended location of vertical Control Joint

Side/Eaves Elevation

NOTE:

1. The Supercrete™ Distributor determines the number of battens and batten spacing using wind and earthquake load information provided by the building owner
2. Vertical control joints not shown on these details. Refer to Section 2.2.2.1, page 19 for control joint locations. Building owner to specify control joint locations on the project construction drawings.

Steelock™ a unique steel top hat batten mounting system.
Thermoseal™ a unique thermally efficient closed cavity cladding system.

Supercrete™

**PANEL CLADDING
CONSTRUCTION**

Title: Supercrete™ Panel Two Storey Construction
Details with Horizontal Mid-floor Panels

Date: February 2014

Scale: N.T.S.

Detail No. SPC 1-4a

This drawing must be read in conjunction with the Supercrete Panel Cladding System Design & Installation Guide