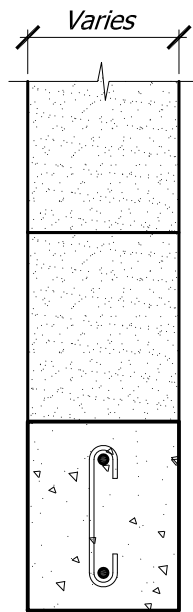


150, 200, 250,  
or 300mm

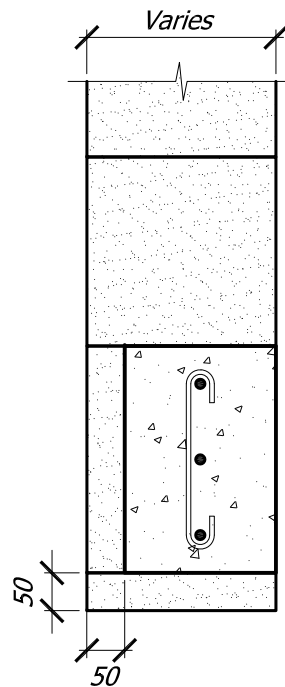
**TYPE 1**



150, 200, 250,  
or 300mm

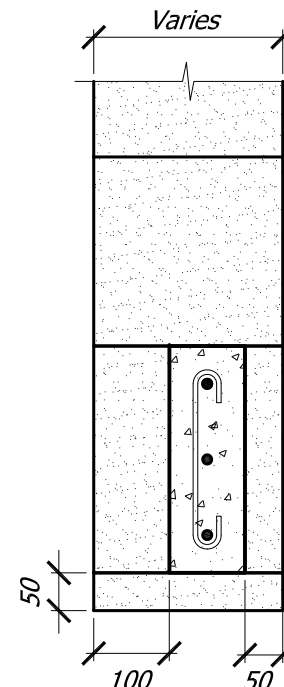
**TYPE 3**

Can be  
from  
50mm  
panel or  
closure  
block



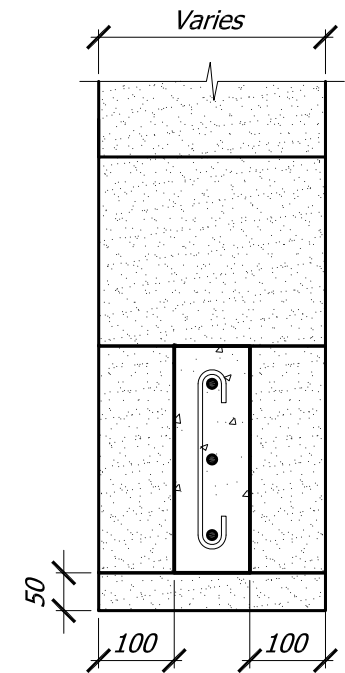
150, 200, 250,  
or 300mm

**TYPE 4**



200, 250 or  
300mm

**TYPE 6**



250 or 300mm

**TYPE 7**

**NOTE: Steel Reinforcing to be sized by Project Engineer to suit load conditions**

**Copyright © Superbuild International Ltd 2013**

**Supercrete™**

Title:

**Cast Insitu Lintel Types**

**BLOCK CONSTRUCTION**

Date: **September 2013**

Scale. **1 : 10**

Detail No. **BLK-6.1**

This drawing must be read in conjunction with the Supercrete Block Design Guide