

Selected Supercoat™ Coating system typically or plasterboard linings

Supercrete™ blocks glued together with 2-3mm nominal of Supercoat™ Superbond Adhesive

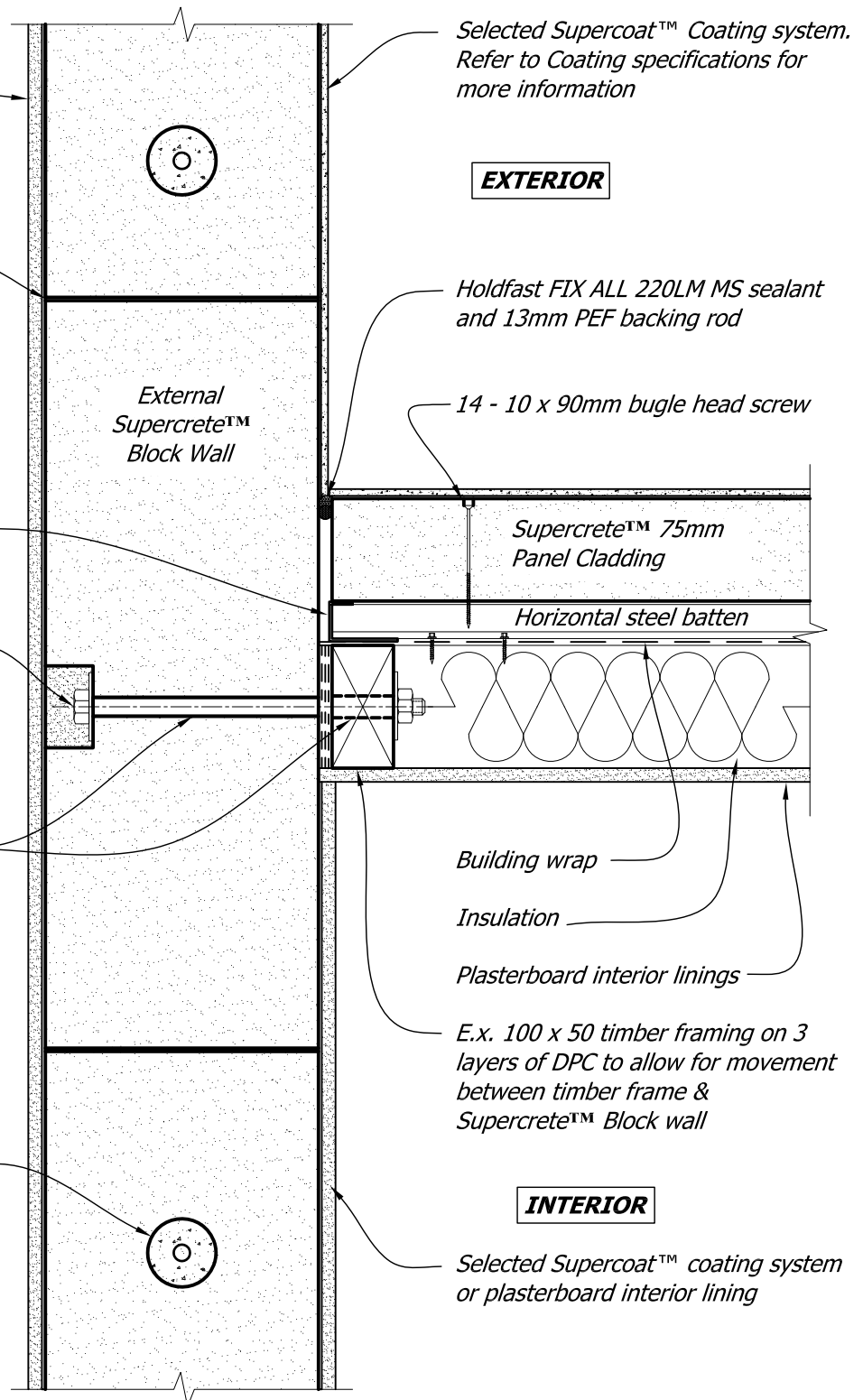
Zincalume or galvanized closure channel flashing to close cavity space

M12 bolt fixed through Supercrete™ block wall with 50mm square washer and head countersunk into block wall.

Oversize holes, 14mm in Supercrete™ Block wall & 16mm in ex 100 x 50 timber stud to allow for differential movement

INTERIOR

50mm ϕ holes drilled in each course of Supercrete™ block work to form a core for grouting ϕ 12 vertical reinforcing rods @ 1000mm crs max



Copyright © Superbuild International Ltd 2013

Supercrete™

Title: **Plan of Supercrete™ Block to Supercrete™ Panel Cladding Joint**

BLOCK CONSTRUCTION

Date: **September 2013**

Scale: **1 : 5**

Detail No. **BLK -3.2**

This drawing must be read in conjunction with the Supercrete Block Design Guide