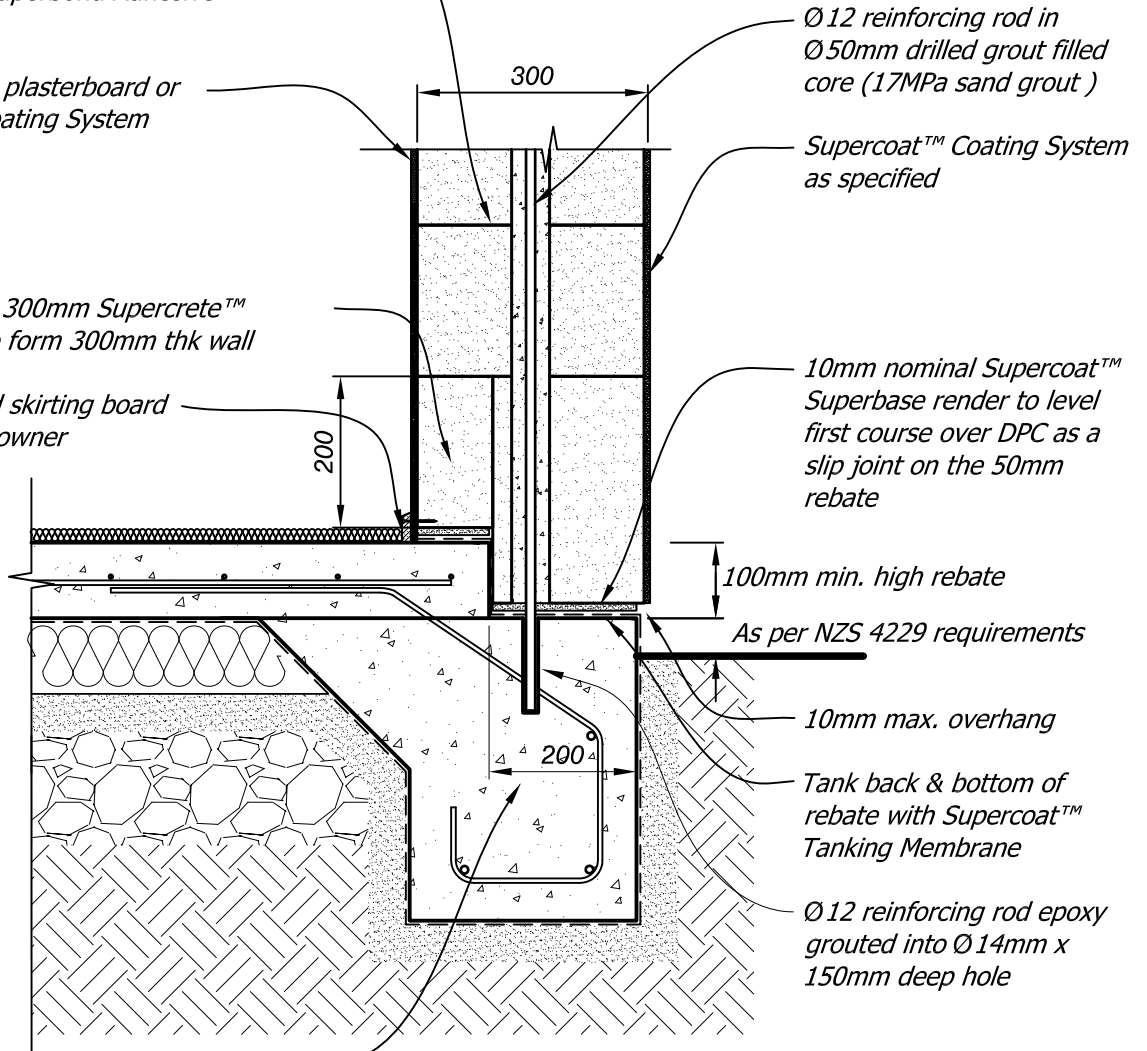


600 x 300 x 250mm Supercrete™ Blocks
glued together with 2-3mm nominal
Supercoat™ Superbond Adhesive

Internal linings plasterboard or
Supercoat™ Coating System

ex 600 x 100 x 300mm Supercrete™
Block packer to form 300mm thk wall

Floor finish and skirting board
as selected by owner



Ø12 reinforcing rod in
Ø50mm drilled grout filled
core (17MPa sand grout)

Supercoat™ Coating System
as specified

10mm nominal Supercoat™
Superbase render to level
first course over DPC as a
slip joint on the 50mm
rebate

100mm min. high rebate

As per NZS 4229 requirements

10mm max. overhang

Tank back & bottom of
rebate with Supercoat™
Tanking Membrane

Ø12 reinforcing rod epoxy
grouted into Ø14mm x
150mm deep hole

Reinforced concrete slab & foundation
footing to NZS 4229 or engineer's
drawings & specifications

Copyright © Superbuild International Ltd 2013

Supercrete™

Title: **Type 6 Foundation Detail**

BLOCK CONSTRUCTION

Date: **September 2013**

Scale: **1:10**

Detail No. **BLK 2.7**

This drawing must be read in conjunction with the Supercrete Block Design Guide