

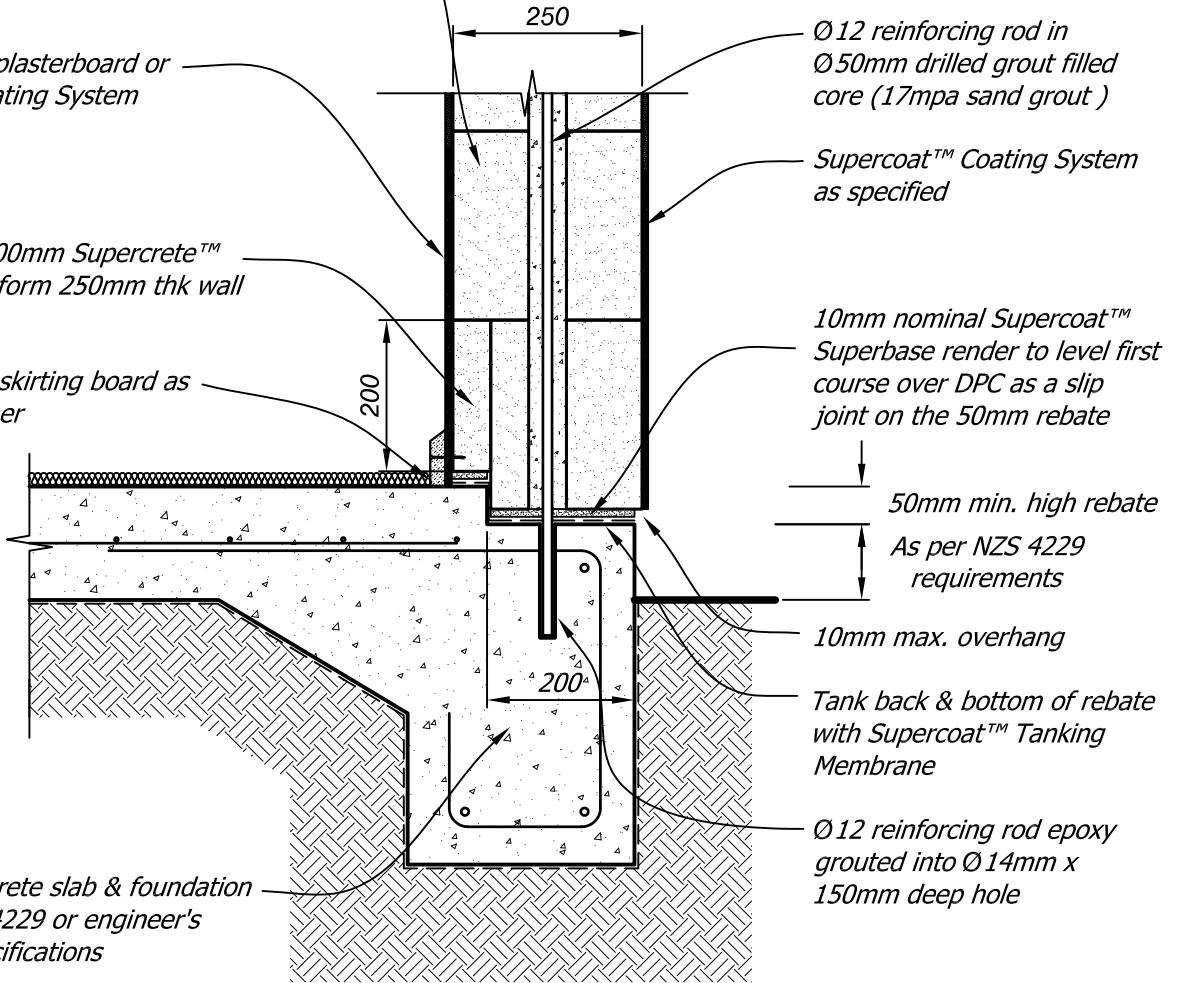
600 x 250 x 250mm Supercrete™ Blocks  
glued together with 2-3mm nominal  
Supercoat™ Superbond Adhesive

Internal linings plasterboard or  
Supercoat™ Coating System

ex 600 x 50 x 300mm Supercrete™  
Block packer to form 250mm thk wall

Floor finish and skirting board as  
selected by owner

Reinforced concrete slab & foundation  
footing to NZS 4229 or engineer's  
drawings & specifications



Ø12 reinforcing rod in  
Ø50mm drilled grout filled  
core (17mpa sand grout)

Supercoat™ Coating System  
as specified

10mm nominal Supercoat™  
Superbase render to level first  
course over DPC as a slip  
joint on the 50mm rebate

50mm min. high rebate  
As per NZS 4229  
requirements

10mm max. overhang

Tank back & bottom of rebate  
with Supercoat™ Tanking  
Membrane

Ø12 reinforcing rod epoxy  
grouted into Ø14mm x  
150mm deep hole

Copyright © Superbuild International Ltd 2013

**Supercrete™**

Title: **Type 2 Foundation Detail**

**BLOCK CONSTRUCTION**

Date: **September 2013**

Scale: **1:10**

Detail No. **BLK 2.3**

This drawing must be read in conjunction with the Supercrete Block Design Guide