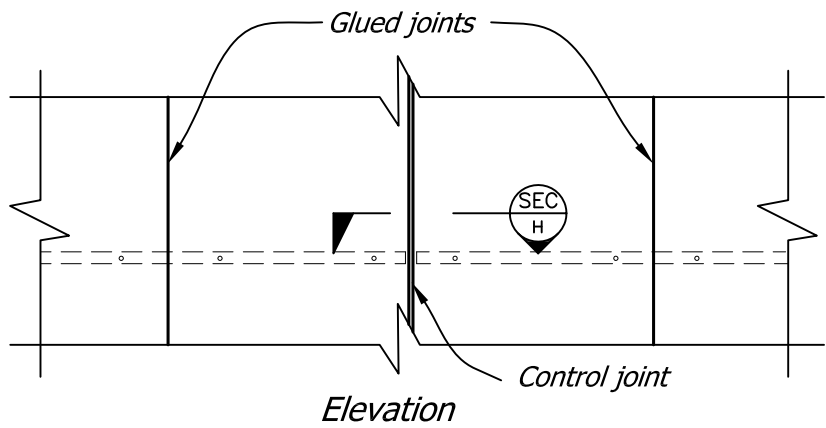
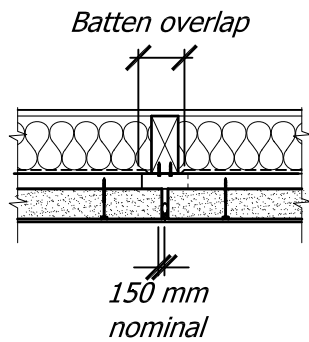


Section H

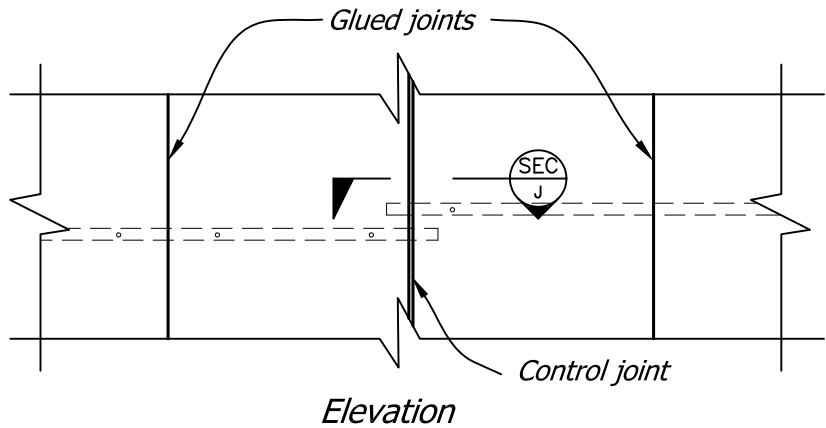


### Vertical Control Joint - Option 1

(Used where double studs are present)

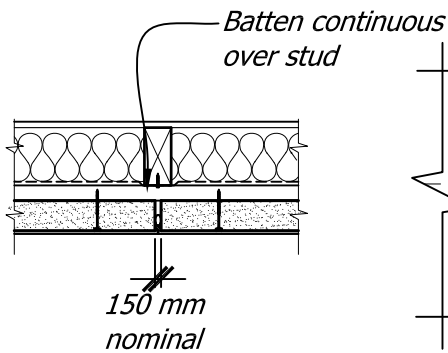


Section J

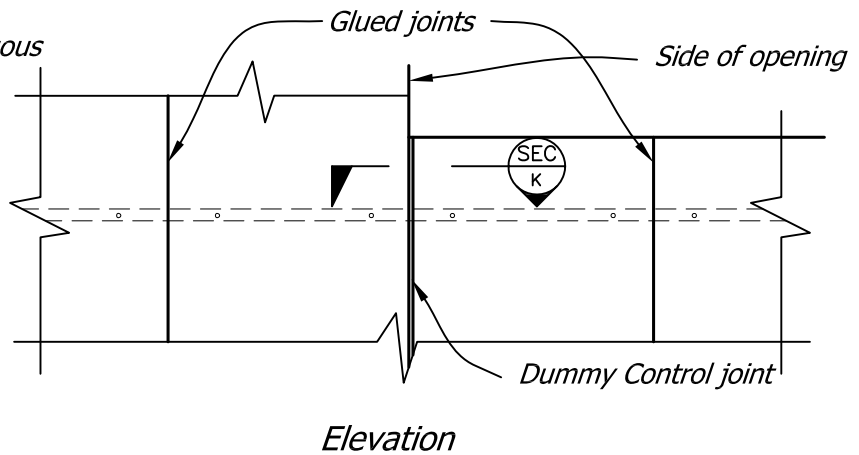


### Vertical Control Joint - Option 2

(Used at single studs)



Section K



### Dummy Vertical Control Joint

Dummy joint is not a true control joint and will be used only along window and door openings where trying to make up to 10mm of space, thus eliminating the need to cut extra panels

Steelock™ a unique steel top hat batten mounting system.  
Thermoseal™ a unique thermally efficient closed cavity cladding system.

**NOTE:**

That at all control joints, battens will be discontinuous to allow effective movement of the building at these locations

Copyright © Superbuild International Ltd 2013

<b>Supercrete™</b>	Title: Control Joint Options		
	Date: February 2014	Scale: N.T.S.	Detail No. SPC 3-2
<b>PANEL CLADDING CONSTRUCTION</b>	This drawing must be read in conjunction with the Supercrete Panel Cladding System Design & Installation Guide		